



Proposal: Penrith City Council

Sydney Science Park

Luddenham

Attn: City Planning Team



Marcus Zorich

Director, Koala Retreat

marcuszorich@koalaretreat.com

1 December 2015



An introduction to Koala Retreat

Located in Mulgoa, Koala Retreat has been serving koalas in both captivity and the wild for close to 20 years.

In response to industry demand, our business has evolved over the last 10 years to provide specialist consulting services in behaviour and nutrition. We approach developing the mental enrichment of koalas in captivity to the same level that would have occurred had they remained in the wild. For many reasons, however, the dietary program we provide is far superior to that they would receive in the wild. We've created a custom dietary program that expands their palate by introducing a more diverse range of eucalyptus tree species, and in this way we can mould and determine their mood swings, personality and temperament.

Koala Retreat is more than just a sanctuary for koalas – it is so much more! We also focus very heavily on supporting the zoo and commercial wildlife industry, educating the community as to their dietary, husbandry and mental requirements, and engaging in ongoing research and development to ensure we remain the leading consultants in the industry.

Koala Retreat believe we should be consisted along the lines of the Federal Government announcement recently, in its \$1 billion innovation & science package. Koalas in times of need change their dependency on Eucalyptus trees. The challenge today is to explore those options.

A new approach to koala management and care

Koala Retreat is pushing for an evolution of the industry, and this is where we are extremely keen to be a part of the proposed Science Park. Koalas don't have to be a part of a Zoo or a wildlife park – they are an entity on their own. They already have their own industry, which sits outside of every other native animal – they generate in excess of \$2b for the Australian tourism industry. In fact, most Australian wildlife parks were built on koala money! Managed properly, koalas not only pay their way but also earn more than enough for us to continually reinvest into their infrastructure as well as support ongoing organisational growth.

Traditionally there have been two approaches to koala management:



-
- Outside-In, and
 - Inside-Out.

The conservation sector, which focuses on protecting the live environment in which the animals live, works *inside-out*. Conservation programs start at a point of reference using natural resources and material.

The captive management sector, on the other hand, focuses on bringing in natural resources and material from the outside into one fixed address. This is the *outside-in* approach.

The challenge has always been, however, the significant disconnect between the two groups due to their differing belief systems. Koala Retreat is about bringing the two together, combining the economic benefits of koalas in captivity within an environment that closely resembles wildlife while promoting education and research.

Our plan is to create an entirely new industry that is based on psychology and how the natural cycle of biodiversity works. We will create programs connecting human, plant and animal intellect, creating and extending on both the emotional intelligence of plants animals and mankind.

In creating the Ultimate life science programs, the goal is to constantly challenge the negation of the difference between working outside-in to inside-out, and contribute to a much larger picture of commerce. Our plans, direction and leadership are all committed to untangling the two conflicting sectors and developing a cohesive one.

Koala Retreat would like the Science Park to benefit in multiple ways by including this amazing marsupial within the centre. Not only do we want to share the work behind the scenes involved in koala maintenance and study, but also provide a forum for entertainment, engagement and education.



Submission to Luddenham Science Park

Research & education facilities

Koala Retreat specialises in consulting and behavioural education for koalas in captivity. This is only a small element of Koala Retreat's operations as we believe in a larger picture that needs to be explored. Such as a behavioural science centre hub, with the overall vision of connecting:

- captive plant management (environment),
- mankind (behaviour) and
- animals (conservation combined with captive management),

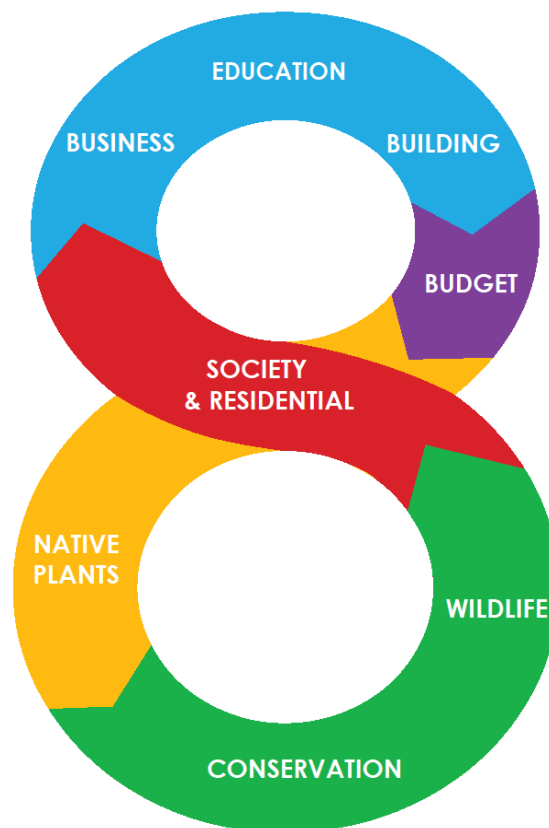
Our goal is to extend knowledge by using facilities around the Penrith region to deliver indoor and outdoor activities. Building on a baseline program of understanding the core values of animals and the behaviourism connected to various species (both domestic and native) before connecting it to human behaviour, we plan to build on the increasing appeal of behavioural science in the education sector (as evidenced by TV shows ranging from Redesign My Brain and The Gruen through to Dogs and Their Secret Lives and Married at First sign).

Koala Retreat has created **a figure eight** mandala to demonstrate our vision. This targets every sector of our community -that benefit from our way of educating -with a commercial outlook that maintains financial sustainability.



KOALA RETREAT

PLANNING THE FUTURE



We are here to disturb the traditional institutions by:

- Offering alternative, non-mainstream events, training and services.
- Developing technology and undertaking research that either changes or reinforces traditional thinking.
- Engaging and educating business, community, councils, schools and individuals.
- Leveraging what we have today in order to create an informed and capable tomorrow.



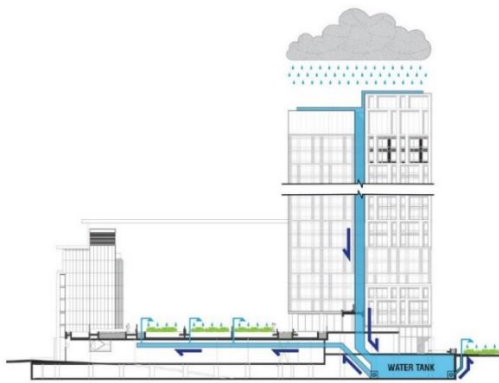
Operations

The Koala Retreat building, as part of the Luddenham Science Park, requires:

- Land for koala food plantation
- 2-3 hectares for a formal set-up
- Street trees for display and pruning, naturalistic style
- Land for building, and
- Investors to share the vision.

Our Building Design

While being surrounded by native wildlife and botanical gardens to demonstrate the beauty of life science, draft concepts of the building have been designed to bring the openness of the Australian wildlife indoors. With natural sunlight hitting 60% of the structure, the design offers a perfect balance between our natural environment and modern infrastructure, and is fuelled by off-the-grid power and water.



Above: Examples of green builds



Conclusion

Harnessing our native koalas as the symbol of the Australian Science Community of the Future

If Australians ever needed a symbol of connection, it's the koala.

They represent everything we believe in – in an ever-changing society where uncertainty is the new normal, this traditional, durable and resilient marsupial provides comfort, hope and inspiration. They are the ideal representatives for an organisation that is determined to combine the very best of conservation with the best of captive management. Working with Koala Retreat will ensure that our research can thrive while community education, engagement and awareness increases.

Obviously this is just the tip of the iceberg. I'm keen to discuss this further, and am available via email or phone on 0419 956 723 any time.

Warm regards,

Marcus Zorich

Company Director

www.koalaretreat.com